

**SCHEDA TECNICA – FELPA ENNIS**  
**COD. HH100**

**ROSSINI.**

CE

CATEGORIA I  
 PER RISCHI MINIMI

**TESSUTO**

50% cotone, 50% poliestere  
 Peso 260 g/m<sup>2</sup>  
 Con garzatura

**DESCRIZIONE**

Felpa da lavoro con collo alto e chiusura anteriore con zip, fascia parasudore interna al collo.  
 Polsi e fascia girovita in maglia elastica.

**TAGLIE**

S, M, L, XL, XXL, XXXL, 4XL, 5XL  
 XS solo per 01-blu



G6 – GRIGIO MELANGE

05 – NERO



01 – BLU



12 – GRIGIO



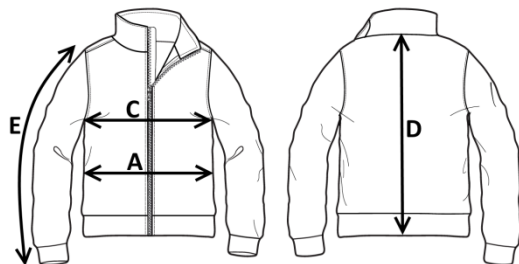
06 – AZZURRO ROYAL




06 – AZZURRO ROYAL



Il margine di tolleranza produttivo, nel rispetto delle dimensioni della taglia, può essere del +/- 3%



SIZE - cm	XS	S	M	L	XL	XXL	XXXL	4XL	5XL
C – ½ CIRCONFERENZA TORACE	49	52	55	58	61	64	67	71	75
A – ½ CIRCONFERENZA VITA	48	51	54	57	60	63	66	70	74
D – LUNGHEZZA CENTRO DIETRO	62	64	66	68	70	72	74	76	78
E – LUNGHEZZA MANICA	57	59	61	63	65	67	69	71	73

 **DATA SHEET – ENNIS SWEATSHIRT**  
CODE HH100

**ROSSINI.**



CATEGORY I  
FOR MINIMUM RISKS



06 – ROYAL BLUE



**FABRIC**

50% cotton, 50% polyester  
Weight 260 g/m<sup>2</sup>  
With brush cotton

**DESCRIPTION**

Work sweatshirt with high neck and front closure with zip, internal sweatband at the neck. Elasticated knit cuffs and waistband



G6 – MELANGE GREY



05 – BLACK



01 – BLUE



12 – GREY

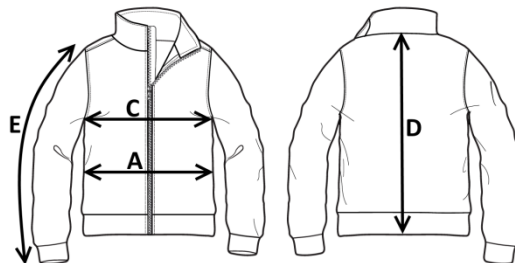


06 – ROYAL BLUE


**SIZES**

S, M, L, XL, XXL, XXXL, 4XL, 5XL  
XS only for 01-blue

Measurements may vary +/- 3%, tolerance within size scale



SIZE - cm	XS	S	M	L	XL	XXL	XXXL	4XL	5XL
C – ½ CHEST CIRCUMFERENCE	49	52	55	58	61	64	67	71	75
A – ½ WAIST CIRCUMFERENCE	48	51	54	57	60	63	66	70	74
D – CENTER BACK LENGTH	62	64	66	68	70	72	74	76	78
E – SLEEVE LENGTH	57	59	61	63	65	67	69	71	73

 **FICHA TÉCNICA – SUDADERA ENNIS**  
CÓD. HH100

**ROSSINI.**

CE

CATEGORÍA I  
PARA RIESGOS MÍNIMOS



06 – AZUL REAL



G6 – GRIS MELANGE



05 – NEGRO



01 – AZUL



12 – GRIS



06 – AZUL REAL



**COMPOSICIÓN**

50% algodón, 50% poliéster  
Peso 260 g/m<sup>2</sup>  
Con interior en felpa

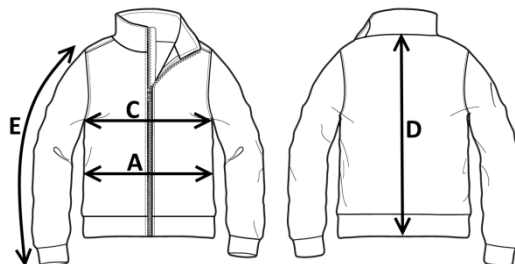
**DESCRIPCIÓN**

Sudadera de trabajo con cuello alto y cierre delantero con cremallera, banda para el sudor interna al cuello.  
Puños y banda en la cintura de punto elástico


**TALLAS**

S, M, L, XL, XXL, XXXL, 4XL, 5XL  
XS solo para 01-azul

El margen de tolerancia productiva, respetando las dimensiones de la talla, puede ser de +/- 3%



SIZE - cm	XS	S	M	L	XL	XXL	XXXL	4XL	5XL
C – ½ CIRCUNFERENCIA TORÁCICA	49	52	55	58	61	64	67	71	75
A – ½ CIRCUNFERENCIA DE LA CINTURA	48	51	54	57	60	63	66	70	74
D – LONGITUD CENTRAL ESPALDA	62	64	66	68	70	72	74	76	78
E – LONGITUD DE LA MANGA	57	59	61	63	65	67	69	71	73

 **FISA TEHNICA – HANORAC ENNIS**  
COD. HH100

**ROSSINI.**

CE

CATEGORIA I  
PENTRU RISCURI MINIME

**MATERIAL**

50% bumbac, 50% poliester

Greutate 260 g/m<sup>2</sup>

Cu sanforizare

**DESCRIERE**

Hanorac cu închidere în față cu fermoar central, guler înalt, bandă de protecție contra transpirației pe interiorul gulerului.

Manșetele și banda de pe talie din material elastic.

**MĂRIMI**

S, M, L, XL, XXL, XXXL, 4XL, 5XL

XS doar pentru 01-bleumarin



G6 – GRI MELANJ



O5 – NEGRU



01 – BLEUMARIN



12 – GRI



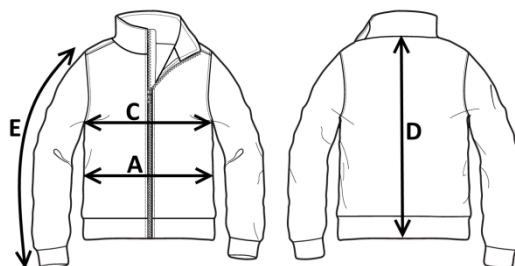
06 – ALABASTRU  
REGAL



06 – ALABASTRU REGAL



Marja de toleranță a producției, respectând dimensiunile mărimii, poate fi de +/-3%.



SIZE - cm	XS	S	M	L	XL	XXL	XXXL	4XL	5XL
C – ½ CIRCUMFERINȚĂ TORACE	49	52	55	58	61	64	67	71	75
A – ½ CIRCUMFERINȚĂ TALIE	48	51	54	57	60	63	66	70	74
D – LUNGIME SPATE	62	64	66	68	70	72	74	76	78
E – LUNGIME MÂNECĂ	57	59	61	63	65	67	69	71	73



**FICHE TECHNIQUE – SEAT-SHIRT ENNIS**  
**CODE HH100**

**ROSSINI.**



CATÉGORIE I  
 POUR LES RISQUES MINIMAUX



06 – BLEU CLAIR ROYAL



G6 – GRIS MÉLANGÉ



05 – NOIR



01 – BLEU



12 – GRIS



06 – BLEU CLAIR ROYAL

**TISSU**

50% coton, 50% polyester  
 Poids 260 g/m<sup>2</sup>  
 Avec brosse en coton

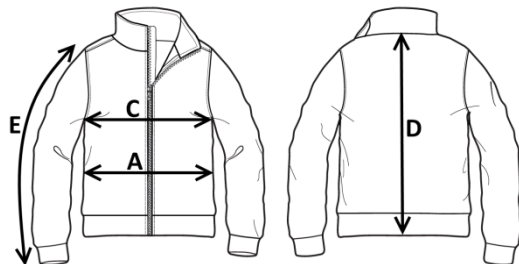
**DESCRIPTION**

Sweat-shirt de travail avec col montant et fermeture avant avec fermeture Éclair, bandeau interne à l'encolure.  
 Poignets et ceinture en tricot élastique

**TAILLES**

S, M, L, XL, XXL, XXXL, 4XL, 5XL  
 XS uniquement en 01-bleu

La marge de tolérance de production, dans le respect des dimensions de la taille, peut être de +/- 3 %



SIZE - cm	XS	S	M	L	XL	XXL	XXXL	4XL	5XL
C – ½ TOUR DE POITRINE	49	52	55	58	61	64	67	71	75
A – ½ TOUR DE TAILLE	48	51	54	57	60	63	66	70	74
D – LONGUEUR CENTRE ARRIERE	62	64	66	68	70	72	74	76	78
E – LONGUEUR MANCHE	57	59	61	63	65	67	69	71	73